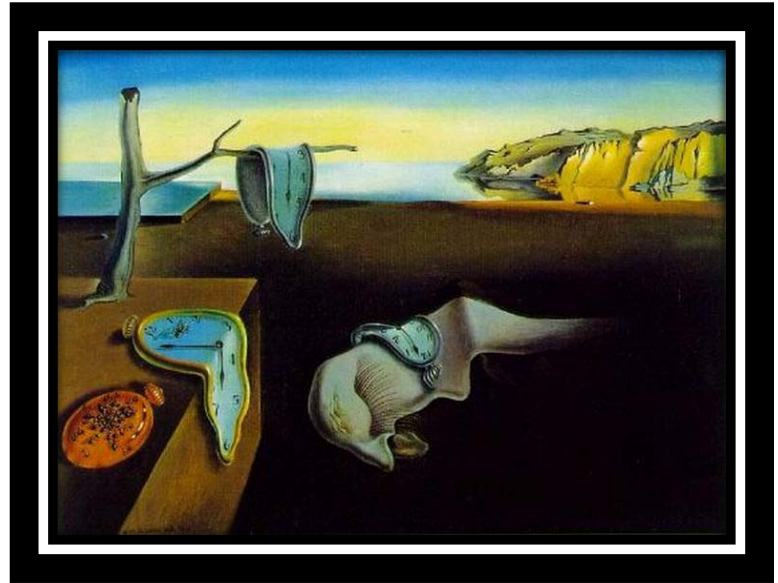


5.2 (pg. 198)

Ratio Tables



Ratio tables- a table with columns filled with pairs of numbers that have the same ratio.

EXAMPLE:

# of frames	1	2	4	16
# of sketches	7	14	28	



EQUIVALENT RATIOS- EXPRESS THE SAME RELATIONSHIP BETWEEN TWO QUANTITIES.

EX. $\frac{1}{7}$ IS EQUIVALENT TO $\frac{2}{14}$ AND $\frac{4}{28}$



THAT'S A
VAN GOGH!



Find Equivalent Ratios by:

- Adding or subtracting quantities in equivalent ratios
- Multiplying or dividing each quantity in a ratio by the same number

EXAMPLE:

Quarts of Paint	15		20
# of paintings	9		

HEY LOOK AT ME!
I'M A FAMOUS
PAINTING THAT
WAS VALUED AT
\$390,000,000!



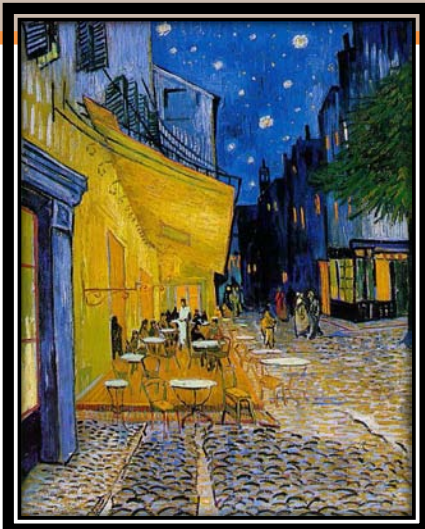
TO GO FROM **15** TO **20**:

SIMPLIFY:

$$\frac{15}{9} \div \frac{3}{3} = \frac{5}{3}$$

MULTIPLY:

$$\frac{5}{3} \times \frac{4}{4} = \frac{20}{12}$$



THAT'S
A VAN
GOGH
TOO!

