

PERCENTS



Percent- means "out of 100" OR "per hundred"



It is a part-to-whole ratio where the whole is 100.

The symbol is %

Going from decimal to percent:

Move decimal point 2 places to the right.

- 0.63 → 63%
- 0.3 → 30%
- 0.364 → 36.4%
- 1.8 → 180%
- 6 → 600%

Look what I can do!!



Going from percent to decimal:

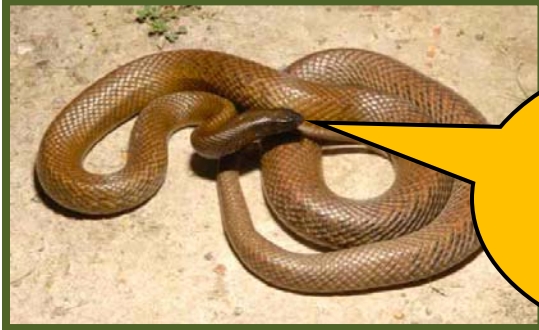
Move decimal point **2** places to the left.

48% \longrightarrow 0.48

6% \longrightarrow 0.06

1.3% \longrightarrow 0.013

0.7% \longrightarrow 0.007



One bite from me will kill 250,000 mice! Try me!

Going from fraction to percent:

Ex. $\frac{1}{8} \longrightarrow$ DIVIDE \longrightarrow 0.125

Move decimal **2** places to the right and add the percent sign. \longrightarrow 12.5%

I am The Black Mamba!

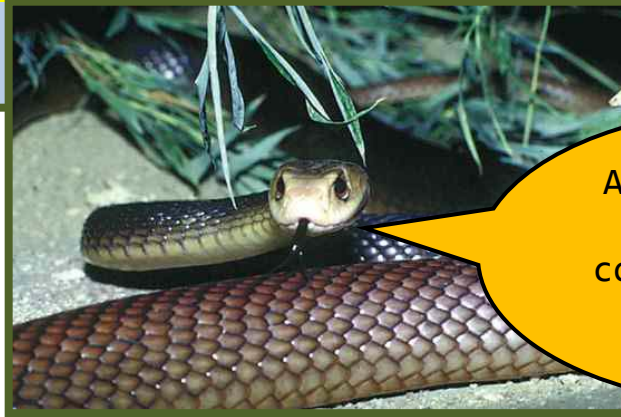


Going from percent to fraction:

Ex. 76% → Place over 100

$\frac{76}{100}$ → Simplify if necessary

$$\frac{19}{25}$$



Aren't I cute???
One bite and I
could kill 12,000
Guinea Pigs...

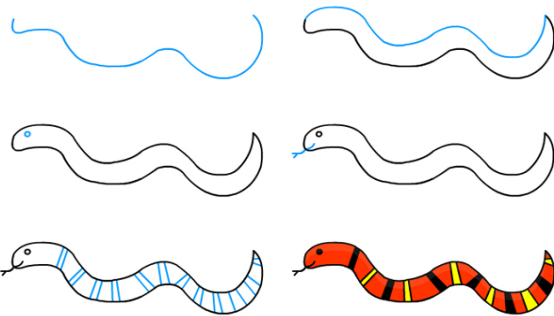
Finding the percent of a number:

Ex. 9 is what percent of 40?

Divide 9 divided by 40 and change into a percentage.

$$40 \overline{)9} = 0.225$$

$$0.225 = 22.5\%$$



Reminder: Going from Decimal to Fraction...just
'Say it" 0.75 is said 'seventy-five hundredths'
75/100...then simplify...3/4

Reminder: Going from Fraction to Decimal...just

DIVIDE!

$\frac{3}{4}$ 3 divided by 4 = 0.75

$$4 \overline{)3}$$

