

PERCENTS



Percent- means "out of 100" OR "per hundred"



It is a part-to-whole ratio where the whole is 100.

The symbol is %

Going from decimal to percent:

Move decimal point 2 places to the right.

- 0.63 → 63%
- 0.3 → 30%
- 0.364 → 36.4%
- 1.8 → 180%
- 6 → 600%

Look what I can do!!



Going from percent to decimal:

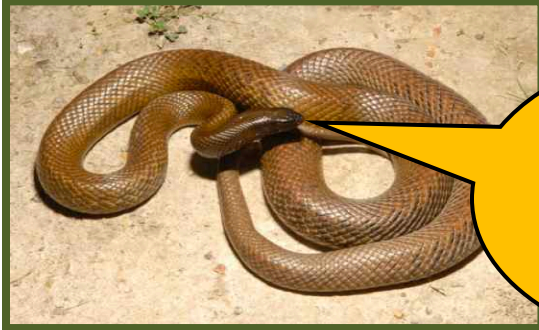
Move decimal point 2 places to the left.

48% → 0.48

6% → 0.06

1.3% → 0.013

0.7% → 0.007



One bite from me will kill 250,000 mice! Try me!

Going from fraction to percent:

Ex. $\frac{1}{8}$ → DIVIDE → 0.125

Then move decimal 2 places to the right and add the percent sign. → 12.5%

I am The Black Mamba!



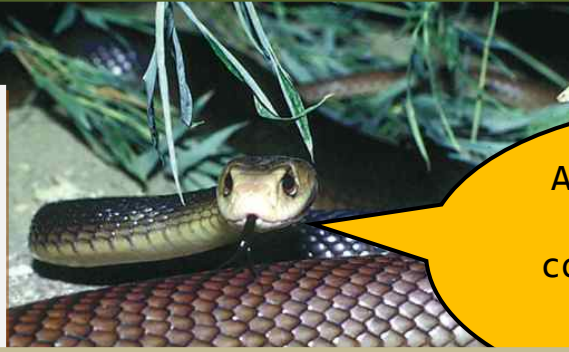
Going from percent to fraction:

Ex. 76% → Place over 100

$$\frac{76}{100} \rightarrow \text{Simplify if necessary}$$

$$\frac{19}{25}$$

If your percent has a decimal, two options:



Aren't I cute???
One bite and I could kill 12,000 Guinea Pigs...

45.5% change to .455, then write $\frac{455}{1000}$ OR

45.5% change to $\frac{45.5}{100}$ then multiply both by 10 to $\frac{455}{1000}$

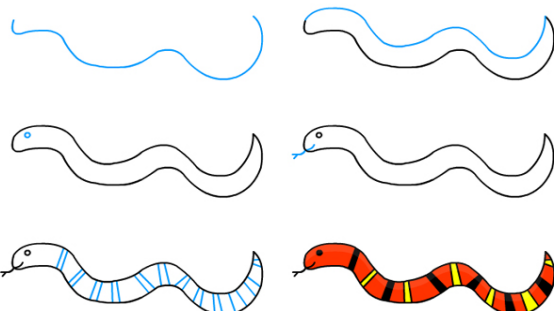
Finding the percent of a number:

Ex. 9 is what percent of 40?

Divide: 9 divided by 40 and change into a percentage.

$$40 \overline{)9} = 0.225$$

$$0.225 = 22.5\%$$



<https://listverse.com/2011/03/30/top-10-most-venomous-snakes/>

Reminder: Going from Decimal to Fraction...just
'Say it' 0.75 is said 'seventy-five hundredths'
75/100...then simplify...3/4

Reminder: Going from Fraction to Decimal...just

DIVIDE!

$\frac{3}{4}$ 3 divided by 4 = 0.75

$$4 \overline{)3}$$

